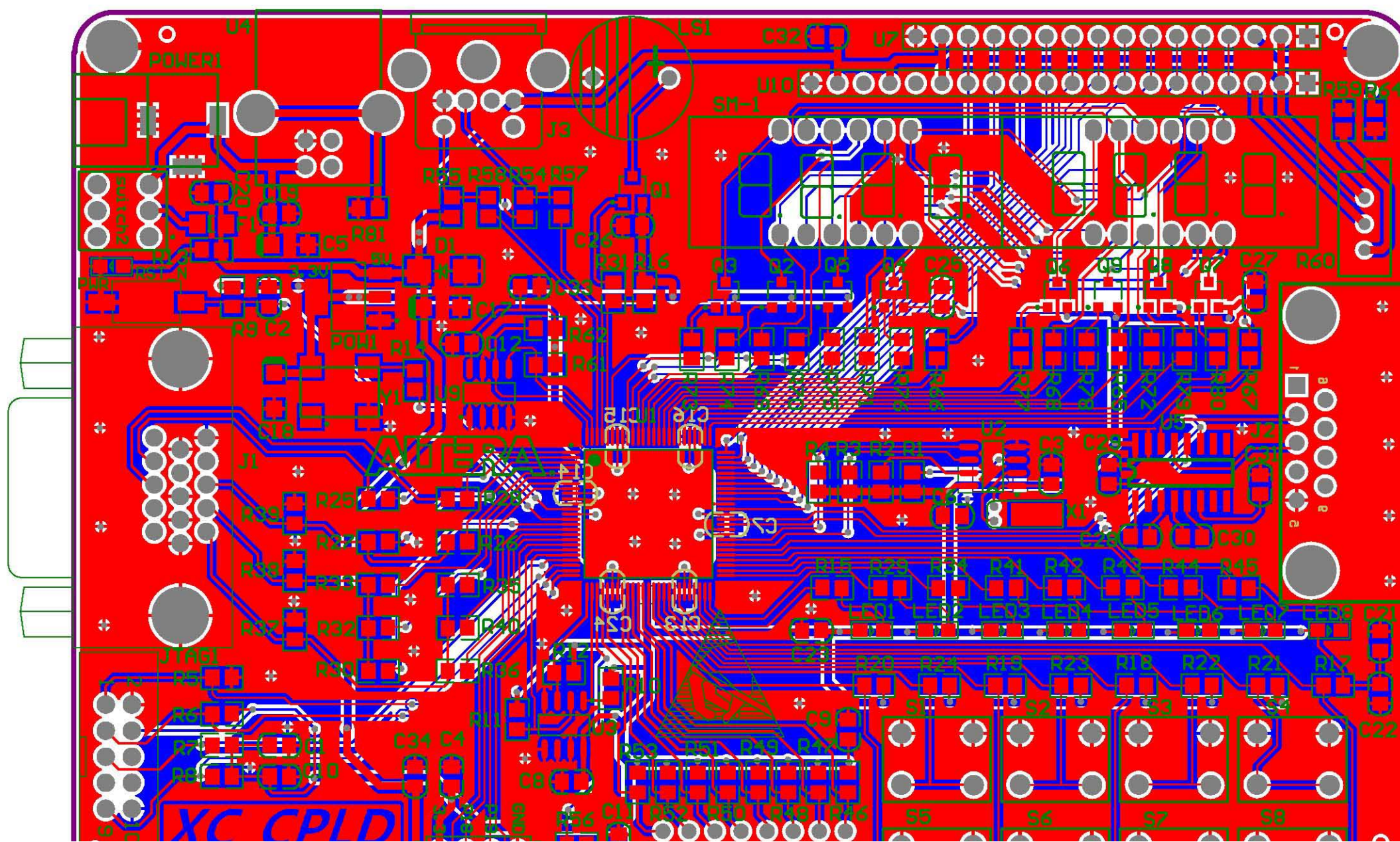


Title





Comment	Description	Designator	Footprint	LibRef	Quantity
104	Capacitor	C1, C2, C4, C6, C7, C8, C9, C10, C11, C12, C13, C14, C15, C16, C18, C20, C21, C22, C23, C24, C25, C26, C27,	0805C	Cap	25
15PF	Capacitor	C3	0805C	Cap	1
10uF/16V	Polarized Capacitor (Radial)	C5, C17, C18	DSO-F2/D6.1	Cap Polt	3
Cap	Capacitor	C28, C29, C30, C31, C33	0805C	Cap	5
IN5822	Schottky Diode	D1	DO-214AC	D Schottky	1
自恢復保險絲	Fuse	F1	1206	Fuse	1
IR		IR1	HDR1X3	IR	1
Connector 15	Receptacle Assembly, 15-Pin, Slim Line Connector VGA 接	J1	VGA	Connector 15	1
RS232		J2	DB9FLW	DB9	1
PS2-6PIN	6 Pin Through Hole PS2 Socket (Kycon PIN)	J3	PS2	PS2-6PIN	1
Header 5X2	Header, 5-Pin, Dual row	JTA01	JTA_0_10	Header 5X2	1
LED	LED	LED1, LED2, LED3, LED4, LED5, LED6, LED7, LED8	0805_LED	LED_1	8
Speaker	Loudspeaker	LS1	SPEAK	Speaker	1
Header 4X2	Header, 4-Pin, Dual row	P1	HDR2X4	Header 4X2	1
AS1117-3.3		POWER1	SOT223	PJ1117	1
PWR2.5	Low Voltage Power Supply	POWER1	POWER-IN	PWR2.5	1
LED1	Typical INFRARED GaAs	PWR	0805_LED	LED0	1
8550	PNP Transistor	Q1, Q2, Q3, Q4, Q5, Q6, Q7, Q8,	SO-G3/C2.5	PNP	9
Res1	Resistor	R1, R2, R3, R4, R5, R6, R7, R8, R9, R10, R11, R12, R15, R16, R17, R18, R19, R20, R21, R22, R23, R24, R26, R27, R29, R30, R31, R32, R33, R34, R35, R36, R37, R38, R39, R40, R41, R42, R43, R44, R45, R46, R47, R48, R49, R50, R51, R52, R53, R54, R55, R56, R57, R58, R59, R61, R62, R64, R65, R66, R67, R68, R69, R70, R71, R72, R73, R74, R75, R76, R77, R78, R79, R80	0805R	Res1	74
	Resistor	R13, R81	0805R	Res2	2
Res2	Resistor	R14	0805R	Res2	1
Res3	Resistor	R25, R28	0805R	Res3	2
Res Tap	Tapped Resistor	R60	RPot	Res Tap	1
SW-SPST	Single-Pole, Single-Throw	RST_N	K2	SW-SPST	1
SW-PB	Switch	S1, S2, S3, S4, S5, S6, S7, S8	KEY_4	SW-PB	8
SW DIP-8	DIP Switch, 8 Position, SPST	S9	DIP-16	SW DIP-8	1
SM-4		SM-1	SM-8	SM-4	1
		switch2	KEY_6	SW-SUO	1
EPM240T100C5N	MAX II 3.3/2.5V CPLD, 80 I/Os, 240 Logic Elements, 100-Pin Plastic TQFP, Commercial Temperature,	U1	TQFP100_N	EPM240T100C5N	1